

No. 14772

FILED AT
 JUN 1934
 MARTIN COUNTY
 FLORIDA
 J.P. Pomeroy

Salerno White School
 PLAT SHOWING
 The Property of The Martin County Board of Public Instruction, Martin County, Florida

— Description —
 Being Lots 1 to 16 inclusive, Block 22, as shown on the Official ^{MAP} of the Town of Salerno, an Incorporated Town, said Map was Recorded in the Public Records of Martin County, Florida, in Book of Plats No. 1, Page 72 on August 17th, 1927. Said Block 22 is bounded on the North by St. Lucie Avenue, on the South by Cleveland Avenue, on the East by Fifth Street and on the West by Sixth Street. All the Streets are 60 feet wide. Block 22 contains 2.74 Acres + said Block 22 is 315 feet on St. Lucie and Cleveland Avenues, and 380 feet along Fifth and Sixth Streets all in school district no. 2 buildings and sidewalks shown on the Plat attached are as located on the ground

— DEDICATION —
 State of Florida } ss.
 County of Martin }
 Know All Men By These Presents
 that the Martin County Board of Public Instruction, of Martin County Florida, owners in fee simple of the above described tract of land, have caused the same to be surveyed and platted as shown hereon, and do hereby Dedicate to the perpetual use of the Public the Streets as shown hereon.

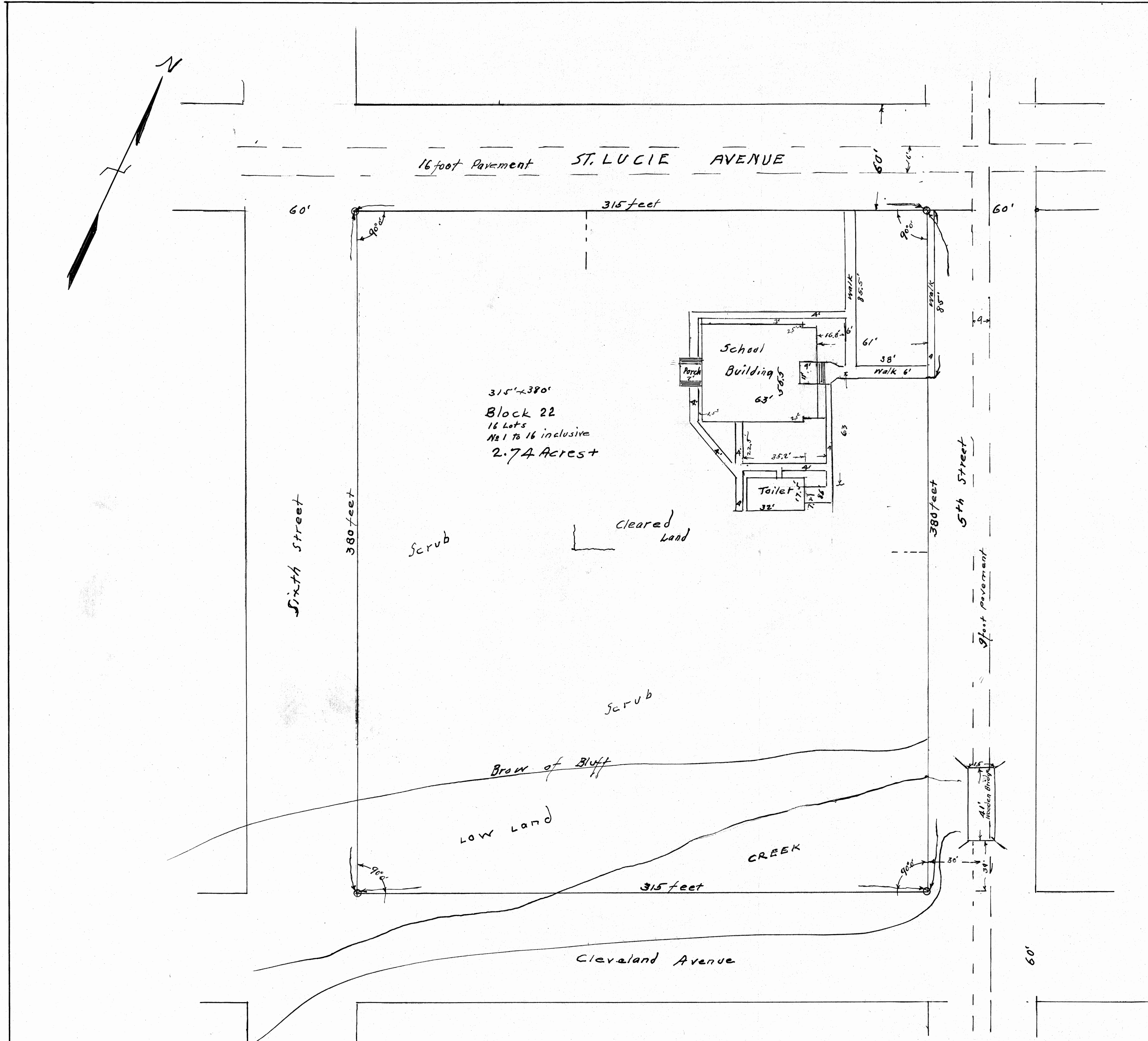
WITNESSES
 H.E. Knight
 Aurora Ferguson
 I.L. Decker
 Ed. L. Hosford
 S.B. Thayer
 J.A. Jamison

— ACKNOWLEDGEMENT —
 State of Florida } ss.
 County of Martin }
 I hereby Certify, that on this day personally appeared before me, I.L. Decker, S.B. Thayer, Ed. L. Hosford, and J.A. Jamison known to be the members of the Martin County Board of Public Instruction who being sworn, said that they executed the above dedication freely and voluntarily as such Officers for the purposes therein expressed, and their act and deed was the act and deed of the Martin County Board of Public Instruction.
 Witness my hand and Official Seal at Stuart, Florida
 this 14th day of June 1934
 William Johnson
 NOTARY PUBLIC
 MY COMMISSION EXPIRES June 14th 1934

— Surveyor's Certificate —
 State of Florida } ss.
 County of Martin }
 I hereby Certify the attached Plat is a correct representation of a survey made by me and is true and accurate to the best of my knowledge and belief
 Wm. H. Roas
 County Surveyor, Stuart, Martin County, Florida,
 Florida State Certificate #121

Subscribed and Sworn to before me this 8th day of February A.D. 1934.
 Antoinette Porter Rogers
 Notary Public
 My Commission Expires Apr 7, 1934

Approved Feby 8th 1934
 By Wm. H. Roas
 County Surveyor



Scale 1 inch = 30 feet